



February 1, 2021

USED EQUIPMENT



Biglerville, PA
800-345-3546

Bellevue, OH/Peru, IN
800-848-8460

Sikeston, MO
573-475-9496



SPRAYERS



\$180,000

2015 AGCO Rogator 1300B, 1367 hours, AGCO Power T4 8.4L 370 hp diesel engine, 1300 gal. SS tank, 120 ft booms with SS boom lines, 20 in. nozzle spacing, 7-section shutoff valve, Raven Viper Pro, Phoenix 300 guidance, parallel swathing, foam marker, A/C, AM/FM radio, air ride seat, fenders, 380/90R46 tires (50% remains). Motivated seller. SN: AGCA1300LFNSL1015 (Dansville, NY) **BROKERED**



\$285,000

2019 AGCO Rogator RG1100C, 824 hours, AGCO turbo diesel engine, 4-speed hydrostatic auto. trans., AGCO adjustable axles, 4WS, 1100 gal. SS tank, 100 ft booms, 20 in. nozzle spacing, Raven Viper 4, AutoSteer, A/C, AM/FM radio, air ride seat, 380/90R46 tires, front (50% remains) rear (45% remains). SN: AGCA1100AKNNL1103 (PA) **No. U1453**



\$105,000

2015 GVM E370 Prowler, 3900 hours, Cummins QSL 8.9L 370 hp turbo diesel engine, Funk DF250 powershift 11-speed trans., 1800 gal. SS tank, 70/90 ft booms, 15 in. nozzle spacing, 5 body nozzles, 9-section shutoff valve, Raven Viper Pro, AutoSteer, RGL600 Light Bar, foam marker, A/C, AM/FM radio, air ride seat, Firestone 380/90R46 row crop tires (30% remains) and Firestone 650/75R32 floater tires (20% remains). SN: CS-15114XI1041 (MO)



\$9,900

2005 Hardi Navigator 1100, 540 PTO pump, 1100 gal., 80 ft booms with plastic boom lines, single nozzle body, 20 in. nozzle spacing, 4-section shutoff valve, foam marker, chemical inductor, manual adjustable axles, 12.2-42 Titan tires (35% remains). SN: 12391 (OH) **No. U1441**



\$33,950

2008 International DT 7400, 69,400 miles, MaxxForce 300 hp diesel engine, Eaton Fuller 10-speed trans., 1400 gal. SS tank, 55 ft booms with SS boom lines, 60 in. nozzle spacing, 3-section shutoff valve, single body nozzles, Raven, SS chemical eductor, foam marker, A/C, AM/FM radio, air ride seat, fenders, includes front 385/65R Bridgestone (40% remains) and rear 700/50 Alliance tires (40% remains). SN: 1HTWDAARX8J041245 (Cranbury, NJ) **BROKERED**

SPRAYERS



\$35,000

2008 International Workstar, 45,922 miles, Maxxforce diesel engine, Allison auto. trans., 850 gal. SS tank, 50 ft booms with SS boom lines, 15 in. nozzle spacing, 5 body nozzles, SCS 460, foam marker, Goodyear tires (60% remains).

Tank SN: SR-08850TK1002 (Chatham, VA) **BROKERED**

SPREADERS



\$10,000

2015 Ag-Chem AirMax 180, 60 ft booms, electric roll tarp, Raven control nodes. Removed from a 2015 1300B Rogator, came off of unit in working condition.

(PA) **No. U1436A**



\$125,000

2014 AGCO RG1300 RoGator, 1892 hours, AGCO 8.4L 330 hp turbo diesel engine, 4WS, painted 409 SS New Leader L4000G4, Raven Viper Pro, Phoenix 300 GPS, parallel swathing, air ride seat, A/C, beacon lights, fenders, electric roll tarp, Michelin 380/90R46 tires (front 45%, rear 35% remains).

SN: AGCA1300VENS1017 (PA) **No. U1450**



\$125,000

2015 AGCO RG1300B RoGator, 2191 hours, AGCO diesel turbo engine, 4-speed hydrostatic auto. trans., AGCO adjustable axles, 4WS, painted 409SS New Leader L4000G4 spreader body, Raven Viper Pro, AutoSteer, A/C, AM/FM radio, air ride seat, 380/90R46 tires, front (50% remains) rear (45% remains). New roller, bearings, and straight belt.

SN: AGCA1300PFNS1093 (PA) **No. U1452**



\$135,000

2015 AGCO RG1300B RoGator, 2155 hours, AGCO diesel turbo engine, 4-speed hydrostatic auto. trans., AGCO adjustable axles, 4WS, **NEW! GVM Double Duty SR1 9.5-ton 304SS 300 ft³ spreader with a Raven Viper 4 and 700S GPS newly installed**, AutoSteer, A/C, AM/FM radio, air ride seat, 380/90R46 tires, front (50% remains) rear (45% remains). Frame sandblasted and painted by GVM September 2020.

(PA) **No. U1436**



\$95,000

2015 AGCO TG7300 TerraGator, 2100 hours, AGCO 330 hp diesel engine, CVT auto. trans., painted 409 SS New Leader L4000G4 14 ft spreader, Viper Pro, AgCommand controller, Slingshot ready, A/C, premium leather air ride seat, 1000/50R25NHS front tire, 1000/50R25 rear tires (70% remains). Engine rebuilt 6/18 by AGCO under warranty, has 500 hours on it.

SN: AGCA7300LFNS1005 (MO) **No. U1379**



\$8,000

2015 GVM 5' Fusion Insert, 5 ft Fusion insert, fits in GVM Double Duty 8, 9.5 and 11 ton spreader boxes

SN: 130779 (PA) **No. U1431**



\$9,000

2010 GVM 4.5T TranSpread, 304SS, 4.5-ton capacity, 3-speed gear box, hydraulic spinners, (2) 16.5L x 16.1 10 ply tires.

SN: TR-10PS4.51048 (PA)



\$145,000

2019 GVM 7300 Hydra Spread, 5000 miles, Cummins B6.7 250 HP engine, Allison trans., 4WD, 409 SS 8 ton GVM Double Duty spreader, Shur-Lok Roll Tarp, Viper 4+ with guidance software, RGL600 light bar, A/C, AM/FM radio with Weather Band, Front Axle, (2) 385/65R34 Goodyear tires, (2) rear 600/60-30.5 floater tires.

(PA) **No. U1444**



\$17,500

2009 GVM 9275 Prowler, 5700 hours, Cummins QSB 6.7L 275 hp diesel engine, Funk DF250 10-speed powershift trans., 304 SS New Leader L3223G4 multi bin spreader, Ag Leader Integra, A/C, AM/FM radio, air ride seat, Alliance row crop tires (80% remains).

SN: RC-099909T1061 (Kinston, NC)



\$25,000

2010 GVM 9275 Prowler, 5000 hours, Cummins QSB6.7L 275 hp diesel engine, Funk DF250 10-speed powershift trans., 304 SS New Leader L3220G4 8 ton spreader, AgLeader Insight, A/C, AM/FM radio, air ride seat, Firestone floater tires (50% remains). New exhaust pipe and BOC installed, 2020.

SN: RC-109909T1069 (PA)



\$89,000

2011 GVM 9275 Prowler, 4332 hours, Cummins QSB6.7L 275 hp diesel engine, Funk DF250 10-speed powershift trans., 304 SS New Leader L3220G4 multi bin spreader, Raven Viper Pro, A/C, AM/FM radio, air ride seat, front fenders, Row Crop tires (80% remains). Runs smoothly, very clean, garage kept.

SN: RC-111149T1234 (Remington, VA)



PHOTO
COMING
SOON

\$65,000

2013 GVM 9275 Prowler, 3340 hours, Cummins QSB6.7L 275 hp diesel engine, Funk DF250 10-speed powershift trans., GVM Double Duty 9.5 ton spreader, Raven Viper Pro, A/C, AM/FM radio, air ride seat, Goodyear 380/90R46 tires (30% remains), includes set of 650 floater tires (30% remains).

SN: RC-131149T1277 (Friendship, TN)



\$150,000

2015 GVM E325 Prowler, 2700 hours, Cummins QSL9 325 hp diesel engine, 1010 ft-lb torque, auto. ZF WG 210 6-speed powershift trans., 120 in. axles, variable coil spring suspension, 409 SS painted GVM Double Duty 11 ton spreader, Viper Pro, parallel swathing, A/C, AM/FM radio, air ride seat, 380/755R42 tires (40% remains), and Firestone flotation tires, 650 front and 800 rear. Rebuilt engine by Cummins in August 2018. **Frame sandblasted and painted in February 2019.**

SN: CS-15325XI1034 (PA) **No. U1358**



\$210,000

2017 GVM E330AA Prowler, 1287 hours, Cummins QSL9 330 hp turbo diesel engine, Funk DF250 powershift 11-speed trans., Dromos adjustable axles rated for 30,000 lb 108-120 in., 304 SS GVM Double Duty 11 ton spreader with 5 ft fusion insert, Raven Viper 4+, RGL 600 Light Bar, SmarTrax Auto Steer, 480/95R50 row crop tires, tires shown not included. Remainder of 5-year engine/trans./axle warranty included, began April 2017. **Frame sandblasted, painted, and reconditioned by GVM June 2020.**

SN: CS-17330AA1016 (OH) **No. U1420**



\$185,000

2017.5 GVM E330AA Prowler, 2268 hours, Cummins QSL8.9 330 hp turbo diesel engine, Funk DF250 powershift 11-speed trans., Dromos adjustable axles rated for 30,000 lb. 108-120 in., 304 SS New Leader L4000G4 11 ton spreader, Raven Viper 4+, SmarTrax, RGL 600 Light Bar, air ride seat, A/C, AM/FM radio, 380/90R46 Michelin tires (60% remains), includes set of floater tires. Includes remainder of 5-year engine/trans./axle warranty, began on 12/21/17.

SN: CS-17330AA1024 (PA) **No. U1442**



\$260,000

2019 GVM T380 Prowler, 916 hours, Cummins QSL9 380 hp turbo diesel engine, Funk DF250 powershift 11-speed auto. trans., Dromos fixed axles rated @ 34,000 lb., 4WS, 409 SS painted GVM Double Duty 11 ton spreader body, roll tarp, SmarTrax autosteer, Raven Viper 4+, RGL600 Light Bar, A/C, AM/FM/BT radio, air ride seat, 380/105R5 Firestone tires (50% remains).

SN: CS-193804WT1016 (MO) **No. U1459**



\$260,000

2019 GVM T380 Prowler, 855 hours, Cummins QSL9 380 hp turbo diesel engine, Funk DF250 powershift 11-speed auto. trans., Dromos fixed axles rated @ 34,000 lb., 4WS, 409 SS painted GVM Double Duty 11 ton spreader body, roll tarp, SmarTrax autosteer, Raven Viper 4+, RGL600 Light Bar, A/C, AM/FM/BT radio, air ride seat, 380/105R5 Firestone tires (50% remains).

SN: CS-193804WT1018 (MO) **No. U1460**



\$260,000

2019 GVM T380 Prowler, 781 hours, Cummins QSL9 380 hp turbo diesel engine, Funk DF250 powershift 11-speed auto. trans., Dromos fixed axles rated @ 34,000 lb., 4WS, 409 SS painted GVM Double Duty 11 ton spreader body, roll tarp, SmarTrax autosteer, Raven Viper 4+, RGL600 Light Bar, A/C, AM/FM/BT radio, air ride seat, 380/105R5 Firestone tires (50% remains).

SN: CS-193804WT1021 (MO) **No. U1457**



\$260,000

2019 GVM T380 Prowler, 873 hours, Cummins QSL9 380 hp turbo diesel engine, Funk DF250 powershift 11-speed auto. trans., Dromos fixed axles rated @ 34,000 lb., 4WS, 409 SS painted GVM Double Duty 11 ton spreader body, roll tarp, SmarTrax autosteer, Raven Viper 4+, RGL600 Light Bar, A/C, AM/FM/BT radio, air ride seat, 380/105R5 Firestone tires (50% remains).

SN: CS-193804WT1022 (MO) **No. U1458**



\$8,500

1988 International 2554 Spreader, DT466 210 hp diesel engine, Spicer 5-speed, 2-speed rear manual trans., air ride seat, 11 ft New Leader L2020GT spreader, New Leader Mark 4 controller, Firestone front tires (50% remains), and Michelin rear tires (50% remains).

SN: 1HTZLDBR9KH66783 (VT) **BROKERED**



\$25,000

1996 International Spreader, DT466 turbo diesel engine, Roadranger manual 10-speed trans., 304 SS New Leader L2020GT-12 spreader, brand new InCommand 800 with 6500 GPS receiver, front 48/25.00 tires (40% remains), rear 66/43.00/25 right (50% remains) left (30% remains).

SN: 1HTGBAAN6SH204074 (OH) **No. U1427**



\$85,000

2012 John Deere 4940, 4093 hours, John Deere 9.0L diesel engine, hydrostatic trans., 304 SS New Leader L3020G4 spreader, JD Greenstar 2600 controller, AutoSteer, A/C, heat, AM/FM radio, air ride seat, fenders, tires (60% remains). New back end installed, 2020.

(PA)



\$55,000

2011 RBR Vector 300, 4300 hours, Cummins 8.3L diesel engine, Allison auto. 4-speed trans., AxleTech axles rated @ 29,000 lb, painted 409 SS 11-ton New Leader L4000G4 spreader body, Raven Viper Pro, Auto Steer, John Deere cab, 380/90R46 front BKT (60% remains) and 380/90R46 rear Michelin tires (35% remains).

(MO) **No. U1435**

SPREADERS



\$58,000

2011 RBR Vector 300, 4600 hours, Cummins 8.3L 300 hp diesel engine, Allison 3500 4-speed auto. trans., painted 409 SS 9.5 ton New Leader L4000G4 spreader body, Raven Viper Pro, AutoSteer, A/C, AM/FM radio, air ride seat, 380/90R46 tires (40% remains). Also includes set of 650/65R38 floater tires (70% remains).

(PA) **No. U1449**



\$150,000

2017 RBR Vector 300, 2958 hours, Cummins QSB 8.3 300 hp diesel engine, Allison 6-speed auto. trans., New Leader L4000G4 spreader body, Viper Pro, A/C, air ride seat, 380/90R46 tires (50% remains). Also includes (4) Firestone 650/65R38 floater tires.

SN: M1700598 (PA) **No. U1422**

COMBOS



\$220,000

2016 GVM E330WT Prowler, 2851 hours, Cummins QSL 8.9L 330 hp diesel engine, Funk DF250 powershift 11-speed trans., AxleTech axles, 114 in. wide track, 304 SS New Leader L4000G4 11-ton 13 ft spreader with 7-ft MultApplier bin, 1800 gal. SS tank, 120 ft booms, 20 in. nozzle spacing, Raven Viper 4, foam marker, A/C, AM/FM, air ride seat, fenders, Trelleborg 380/90R46 tires (70% remains) and Goodyear flotation tires (30% remains).

SN: CS-16330XI1004 (OH)



\$260,000

2017 GVM E370 Prowler, 1560 hours, Cummins QSL 8.9L 370 hp turbo diesel engine, Funk DF250 powershift 11-speed trans., painted 409 SS GVM Double Duty 11-ton spreader, 1800 gal. SS tank, 120 ft booms with SS boom lines, 20 in. nozzle spacing, 5 body nozzles, 9-section shutoff valve, 4 side mount tanks for injection system, Raven Viper 4, AutoSteer, 3 chemical injection pumps, parallel swathing, foam marker, A/C, AM/FM, air ride seat, 380/75R50 tires (80% remains) and 800/65R32 Firestone floater tires.

SN: CS-17114XI1060 (OH)

TRACTORS



\$38,000

2018 Deutz-Fahr 4080E Tractor with Loader Bucket, 96 hours, FARMotion 80 hp diesel engine, 15x15 trans. up to 25 mph, 4WD front axle with brakes, 13.2 gpm open center hydraulics, 2 rear remote valves, front 360/70R20 BKT tires (95% remains), rear 420/70R30 BKT tires (95%) remains.

SN: ZKDEE702W0RD50349 (PA)

TENDERS



\$8,500

2001 International 4900, 481,187 hours, International DT-466 diesel engine, Eaton manual trans., MP hydraulic transfer pump, Parker PTO, 1000, 500, 65 gal. poly tanks, (2)100 gal. SS pods.

SN: 1HT5DAAN51H402034 (Winchester, VA) **BROKERED**



2010 Dalton Ag DLQHD35,
15 row side dress rig with
1200 gal. poly tank, 37.5 ft
booms, 30 in. nozzle spacing,
3-sections, Y-drops, JD rate
controller for 2630 screen.
Raven rate controller and
display still available. Coulters
and shanks available for
injecting nitrogen.

SN: 11607 (Trappe, MD)

BROKERED

\$10,000



**2010 4660 SpraCoupe
Perkins Diesel Engine
1104D,** 874 hours,
4 cylinder, 4.4L (269 in.³),
125 hp (93 kW) at 2200 rpm.
Engine includes: alternator,
starter injection pump, turbo
charger, and primary fuel
filter and housing.

(PA)

\$5,000



**2006 GVM Spray Rig
Only,** 400 gal. SS tank,
50 ft booms, poly boom lines
with rubber hose, 3-section
shutoff valve, single body
nozzles, SS eductor.

(NY) **BROKERED**

\$5,000



AxleTech Front Axle,
complete 99 in. front axle.

SN:00054

(Landisburg, PA)

BROKERED

\$5,000



AxleTech Rear Axle,
complete 99 in. rear axle.

SN: 00054

(Landisburg, PA) **BROKERED**

\$3,000



**(4) Firestone Row Crop
Tires and Rims,** 380/90R46,
white, with 1 in. offset.

(PA)

\$8,000



**(2) Goodyear Row Crop
Tires,** 380/90R46, white,
with 1 in. offset. **Brand
new!**

(PA)

\$4,125



**Goodyear Ultra Sprayer
Tire,** (1) new Goodyear Ultra
Sprayer tire with 1 in. offset
wheel. 380/90R46.

(Sikeston, MO) **BROKERED**

\$1,300



Alliance Turf tires,
(4) Alliance turf tires. Will fit
any Prowler. 850/50-30.5.

(Sikeston, MO)

BROKERED

\$6,000



(2) Rims 12x46 in., heavy
bead gray, W46-03500P15.
Brand new!

(PA)

Call for Price



February 1, 2021

STOCK EQUIPMENT



Biglerville, PA
800-345-3546

Bellevue, OH/Peru, IN
800-848-8460

Sikeston, MO
573-475-9496



SPRAYERS



\$295,000

2015 GVM E325 Prowler, 4 demo hours, Cummins QSL9, 325 hp diesel engine, ZF WG210 powershift 6-speed trans., 114 in. axles, variable coil spring suspension, 1800 gal. SS tank, combo ready, A/C, AM/FM radio, air ride seat, chemical eductor, fenders, 380/90R46 Trelleborg tires.

SN: CS-15325XI1039 (PA)



\$295,000

2014 GVM E370 Prowler, 393 demo hours, Cummins QSL9 370 hp diesel engine, 1800 gal. SS tank, 4 chemical induction tanks, 60/90 ft booms, dual, low, and high volume boom lines for suspension fertilizer, high volume Ace pump, Viper Pro, Phoenix 200 receiver, SmarTrax 3D, UltraGlide, 380/90R46 tires. Includes 5-year warranty, began May 15, 2017.

SN: CS-14114XI1031 (PA)

SPREADERS



\$41,000

2019 GVM 8.0T TranSpread, 304 SS, 8-ton capacity, 3-speed gear box, ground driven, dual spinners, electronic spinner RPM gauge, Shur-Lok roll tarp, 710/45-26.5 12 ply tires. Perfect for lime, fertilizer, and cover crop application.

SN: TR-19PS8.01162 (PA)

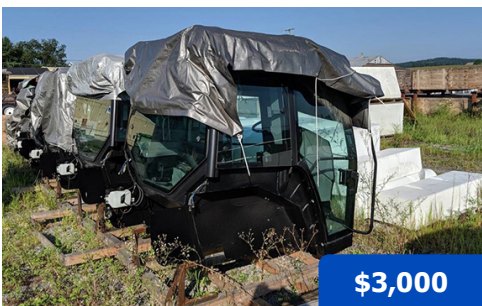


\$265,000

2015 GVM E325 Prowler, Cummins QSL 8.9L 325 hp diesel engine, ZF WG210 6-speed powershift trans., 114 in. axles, variable coil spring suspension, painted 409SS 11-ton Double Duty Fusion Ready spreader body, A/C, AM/FM radio, air ride seat, Raven Viper, Raven Phoenix 200 receiver, RGL 600 Light Bar, SmarTrax 3D auto steer, window tint, roll tarp, 380/90R46 Firestone tires.

SN: CS-15325XI1033 (PA)

MISC.



\$3,000

Crenlo Genesis Cab, Brand new cabs made for 1996-2014 GVM Prowlers. Will fit all Rowcats, 1149/9909T and 9275 Prowlers. Can also fit New Holland Genesis series tractors with modifications.

(PA)

PART NUMBER	DESCRIPTION	QUANTITY	PRICE
W38-13300	Rim 38 x 12 11/16 in. offset (front)	2	\$566.00
W-619060R	Rim W14 x 16.1	2	\$73.00
42-01160 (PA)	Assy., Dash Panel Electronic 2004	3	\$1,327.00